



SNUG 2021 – our capabilities and industry trends

Safety Moment



Safety Moment

We all want the same thing...



Strong Values

Fulton Hogan

Respect

- We understand, listen and learn
- We respect our differences
- We take care of ourselves and others
- We treat others the way they expect to be treated

good work



Fulton Hogan

Energy & Effort

- We bring out the best in everything we do
- We do it once, we do it right
- We never give up
- We keep things simple
- We have fun

good work



Fulton Hogan

Leadership

- We value and grow our people
- We do the right thing
- We are fair and trustworthy
- We are accountable
- The standard we walk past is the standard we set
- We are handsly smart

good work



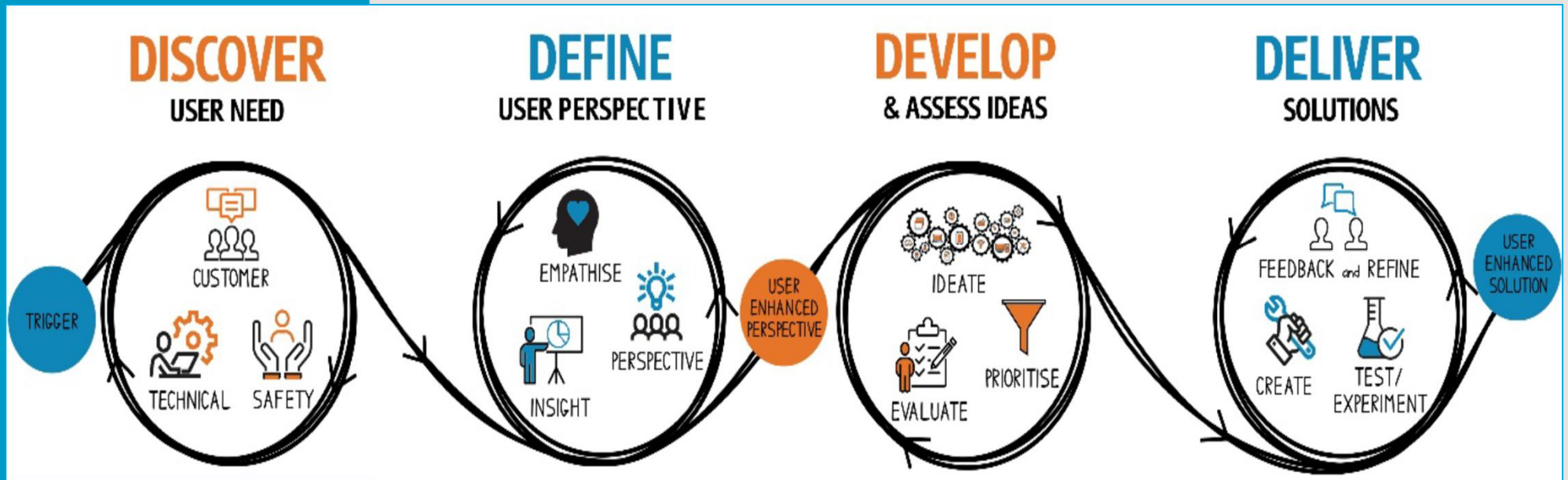
Fulton Hogan

Attitude

- We are one Fulton Hogan
- We take pride in everything we do
- We do what we say
- We challenge and improve
- We work together, win together and celebrate together

good work



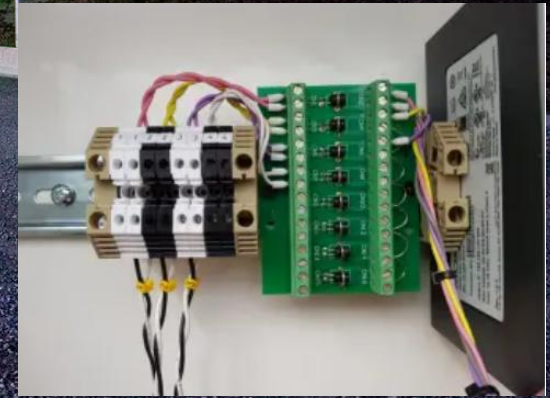


Building the traffic signals infrastructure

SCiD²™



Not just traffic lights these days



 **Fulton Hogan**

The Standard Everyday Stuff



Traffic Signals Capability - Nationwide

- We operate in every Region of the country
- Each Region is made up of several Divisions
- Each Division supports the overall Regional capability
- The Services Division contains our Electrical Department
- Electrical Departments do Traffic signals and ITS

Traffic Signals Capability - Auckland

Auckland Southern Motorway / Auckland Signals Maintenance

Maintenance and Defects on Transport Technology (ITS) Equipment

CCTV Cameras, Webcams, VMS signs, AWS, PLC device controllers, Traffic Counters, Road Side Cabinets

Street lighting, Montrose Boxes, Stormwater pumps

Delivery of the Renewals Programme

HD CCTV, Webcam refresh, Roadside Cabinet renewal, Auto Guidance Signal Generators, TMS Counters

ASM Asset Numbers

Context of the Assets

Asset Quantities



44



190



470



>70
>200km



353



136



>3000



315



302



5

Other - Control devices, radar, Weigh Sensors, workstations, PLCs, controllers, traffic counters etc



4 systems



226



10

Waikato Electrical Department



Traffic Signals Capabilities - Canterbury

19 New traffic signal installations

- CCC Cycle Way Projects
- CCC intersection upgrades
- CNC downstream
- NZTA intersection upgrades
- Safety improvements to CCC controllers (x33 completed)
- Controller Replacements CCC (x9)

Additional capabilities

- ECOV to quarry equipment, ECOV to bitumen trucks & trailers
- Upgrading and New Switchboards
- Maintenance and repairs on heavy industrial plant
- Install and replace VSD's and soft starts

Traffic Signals Capabilities - Otago

Reactive maintenance of Queenstown Signals through NOC Contract

Water and Waste Water Electrical Works, SCADA and PLC

Airfield Lighting and Electrical Systems

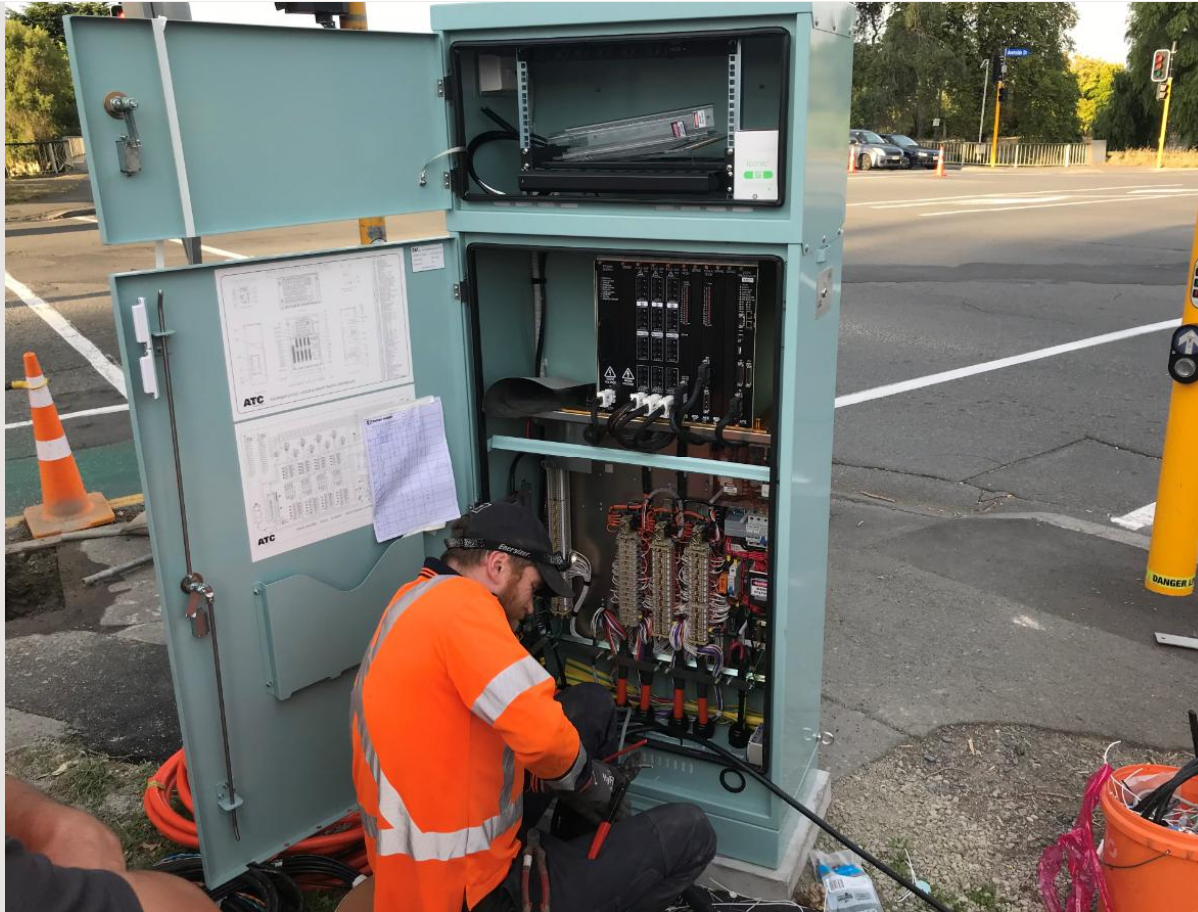
Quarry equipment build and maintenance

Vehicle electrical systems including bitumen heating

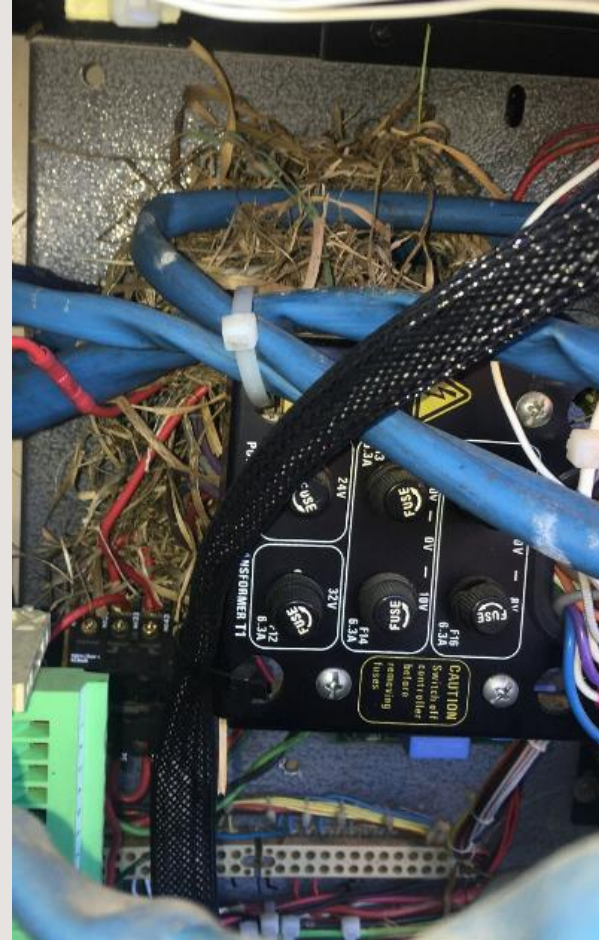
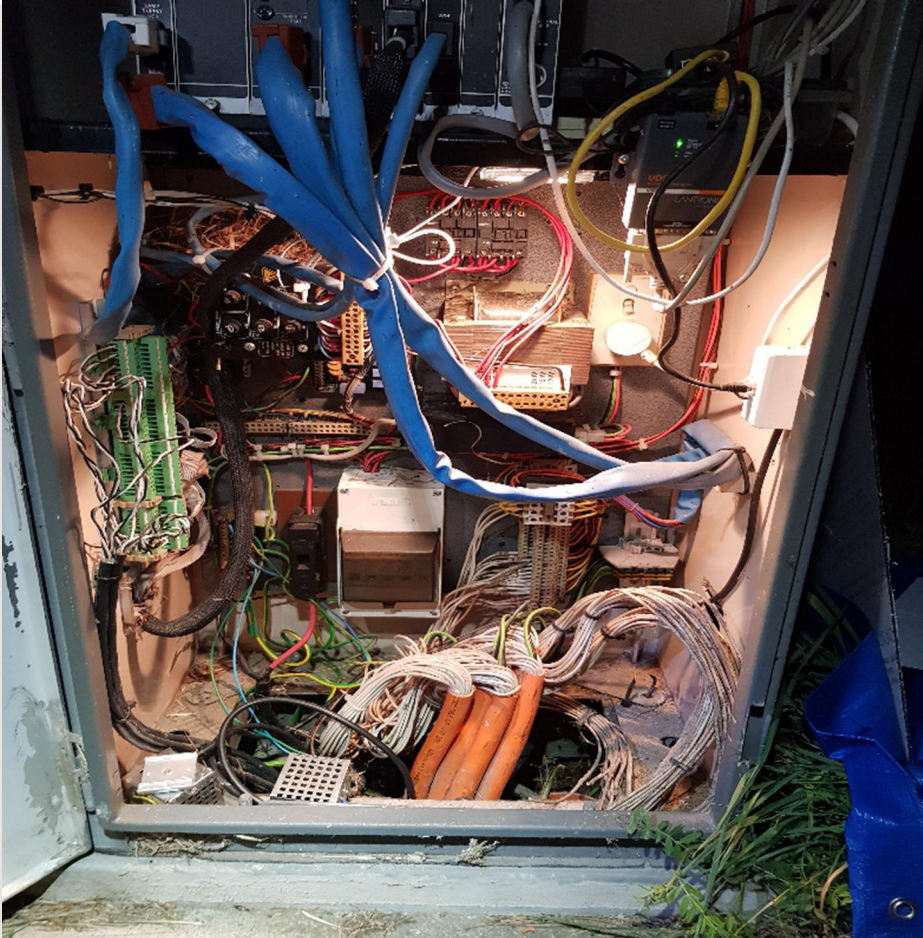
One day we are here



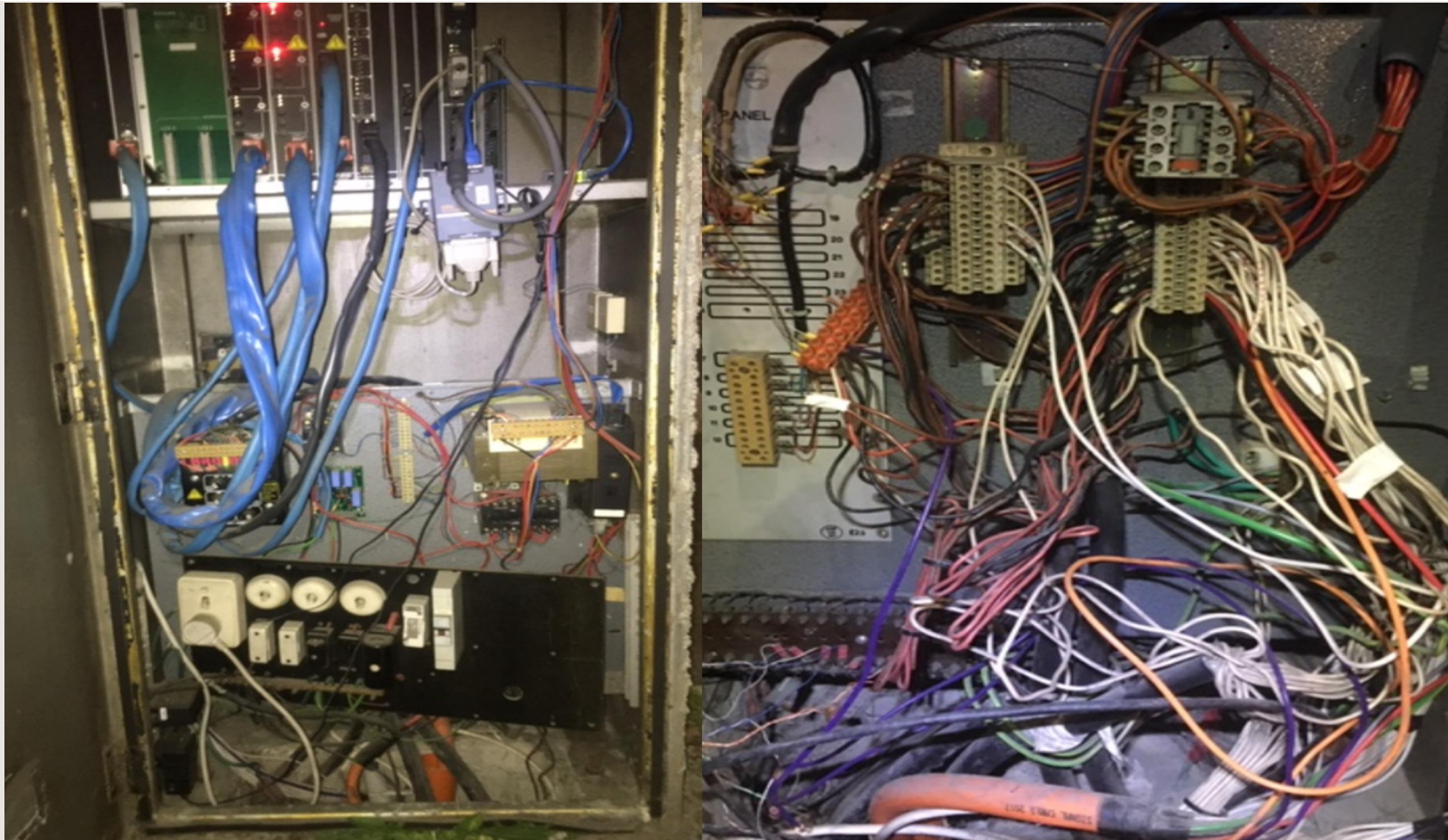
The next day we are here



Why maintain the infrastructure?



Pandora's Box



This one's been here so long, a tree's growing out of the top!



Take pride in our work.....



Did we think of the Customer?



No right turn arrows needed here....



And sometimes they are needed!



Ad Lib Slide



