

WCC Traffic Assets

- 91 Signalized intersections
- 26 Signalized mid-block crossings
- 2 Signalized tunnels
- 64 Traffic cameras
- 9 UPS
- 4 VMS boards
- 154 Electronic signs



What's been happening??

Takina – Wellington Convention Centre

UFB Upgrades for ITS equipment

Upgrade to SCATS 6.9.5

Using VR90 – Demand a Ped Movement

Transitional Cycleways

Let's Get Wellington Moving – has multiple large sub-projects over the next 10-20 years. Approx. \$6 billion. Joint programme of WCC, NZTA and GWRC.



Transitional Cycleways

- Developing multiple cycleways either unidirectional or bi-directional.
- The project aims to use temporary infrastructure. Many changes to signalised intersections due to addition of cycleways, and removal of parking and vehicle lanes
- Tried initially to install as temporary works using TMP's and without prior public consultation.
- WCC is aiming to have 50km of new cycleways around the city within a little more than 2 years.



Let's Get Wellington Moving

The aim is to move more people with fewer vehicles.

A series of projects to provide more attractive travel choices like walking and cycling.

Reduce carbon emissions with our active modes and Public Transport efficiencies

Reshape how we live with Urban development opportunities for Wellington and making it easy to get around.



Let's Get Wellington Moving



Central City Safer Speeds

- The speed limit on most central city streets has changed from 50km/h to 30km/h
- The speed limit on the main through roads will stay at 50km/h.

This has been COMPLETED.

Let's Get Wellington Moving

Central City Walking Improvements

- Small intersection changes on the streets to make it easier to cross to and from the Waterfront.
- Will encourage more people to get around the city by walking and to move more people with fewer vehicles.

Construction has started



Let's Get Wellington Moving

State Highway Safer Speeds

- Make it safer and easier to walk and bike, to help achieve our goal of moving more people with fewer vehicles.
- Lowered the speed limits between the Mount Victoria Tunnel and Wellington Airport.

Construction has started.



Let's Get Wellington Moving

Thorndon Quay and Hutt Road



We're looking at ways to:

- improve safety for everyone
- give buses more priority
- improve 6 intersections and 4 mid-block crossings
- provide better walking and cycling facilities

Construction starts in 2023.

**Absolutely Positively
Wellington City Council**

Me Heke Ki Pōneke

Let's Get Wellington Moving



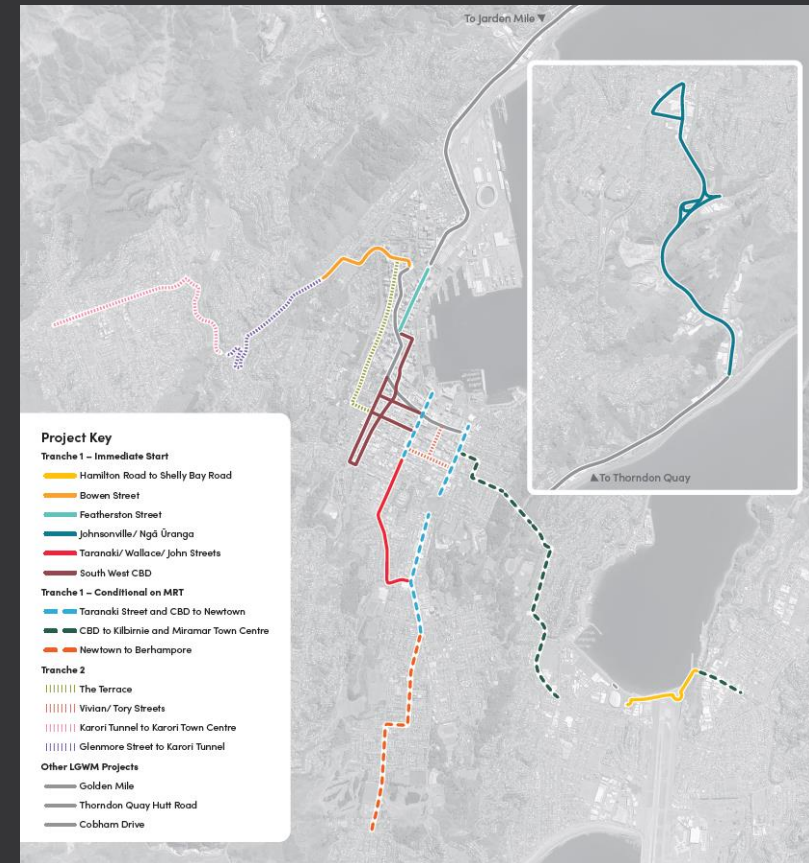
Golden Mile Revitalization

- The 'Golden Mile' is the main retail and commercial strip in the City.
 - The project aims to improve bus reliability and provide opportunities for walking, cycling, and more open spaces.
 - Private vehicles will not be permitted
- Construction starts in 2023.

Let's Get Wellington Moving

City Streets

- The project that glues every LGWM project together and prepares for the MRT project.
- Would tidy up the Transitional Cycleways project.
- This will be constructed in phases over the next 10 years, with some of the Targeted Improvements underway later in 2022.



Let's Get Wellington Moving



Mass Rapid Transit

- Building a new transport system with urban design that will connect the Airport and the Railway Station.
- MRT is the end goal with enhanced Cycling and Walking.
- Constructing a secondary 4-lane Mt Victoria tunnel for motor vehicles while the existing tunnel will be for pedestrians and cyclists.

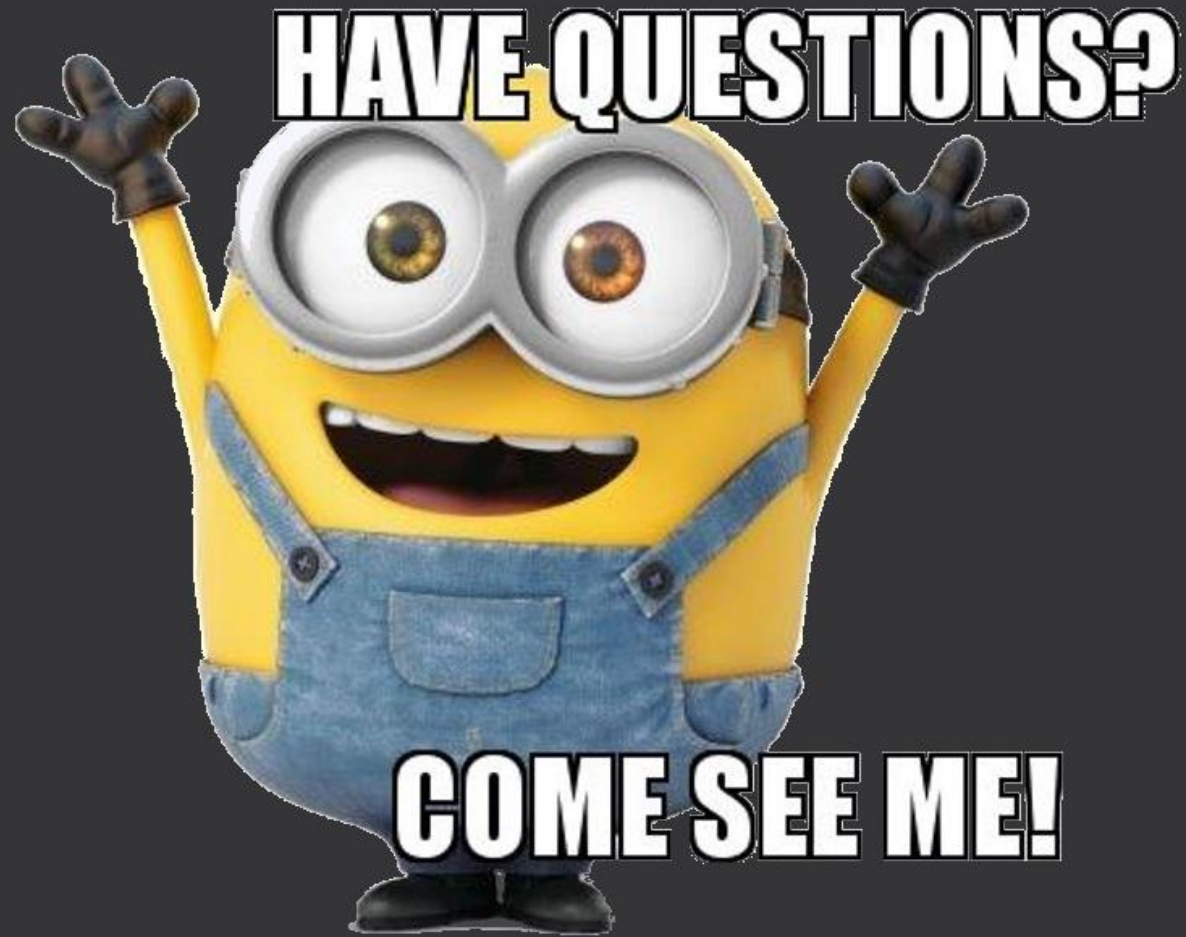
Construction in 2028.

**Absolutely Positively
Wellington City Council**

Me Heke Ki Pōneke

Combining these projects together

- Combining the Transitional Cycleways and Let's Get Wellington Moving requires a lot of collaboration between the two projects and the stakeholders.
- A combination of this with Utilities upgrades and Building re-strengthening and developments along with BAU roadworks and events throughout the city has been a challenge.
- Will need constant communication, messaging and collaboration to minimize disruption to businesses, traffic and residents. Disruption to private vehicle traffic will be given less priority than in the past.
- We are looking at expanding our team to improve resilience while these works are on-going.



Absolutely Positively
Wellington City Council

Me Heke Ki Pōneke