



Dunedin Regional Update





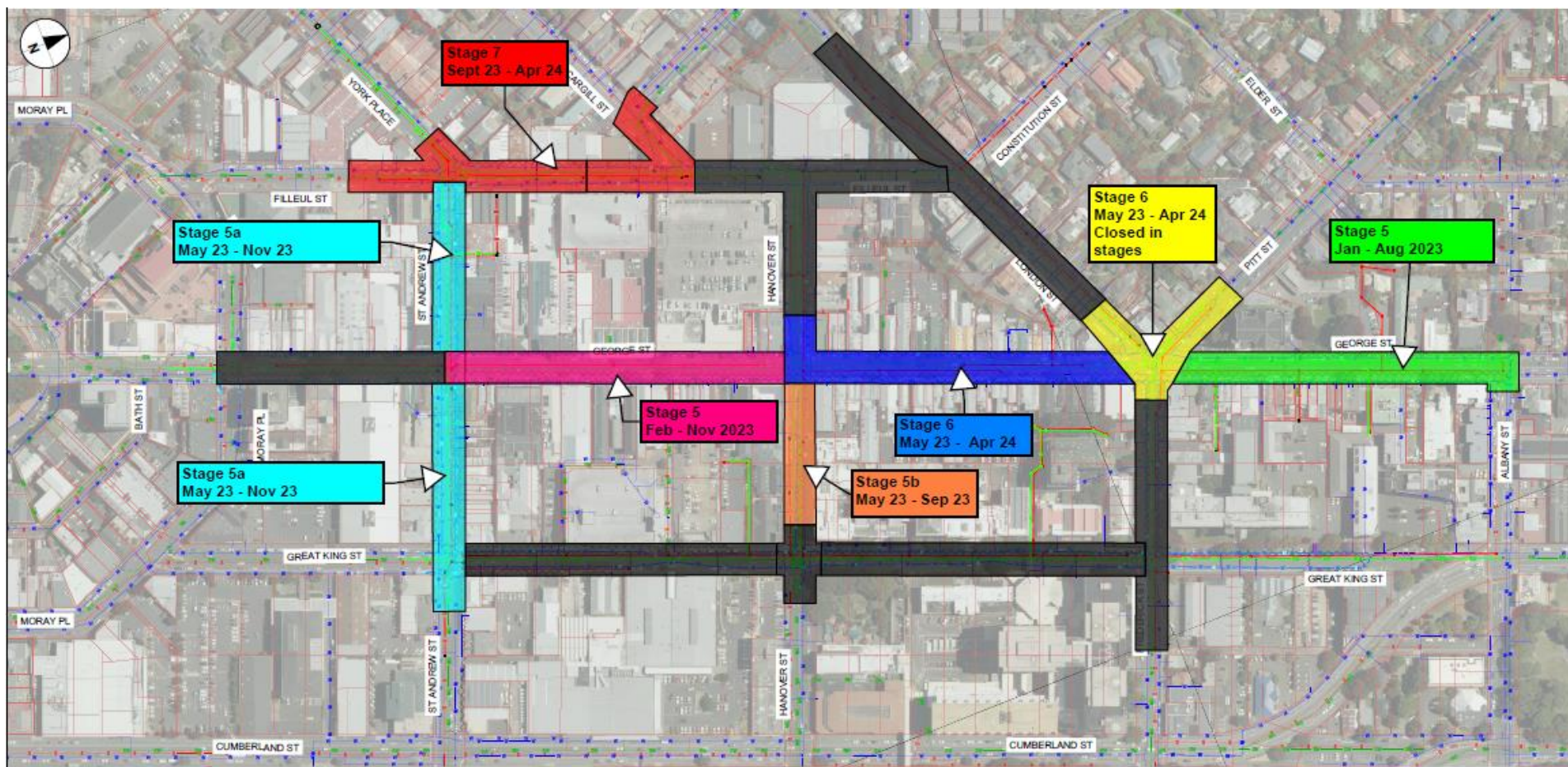
Central City Upgrade

- George Street one way south bound (toward the Octagon)
- 10 km/h speed limit on George Street, 30km/h on surrounding streets
- Work began late 2021, due for completion mid 2024
- 10 signalised intersections effected; 1 new set, 8 completely renewed, 1 partially renewed.



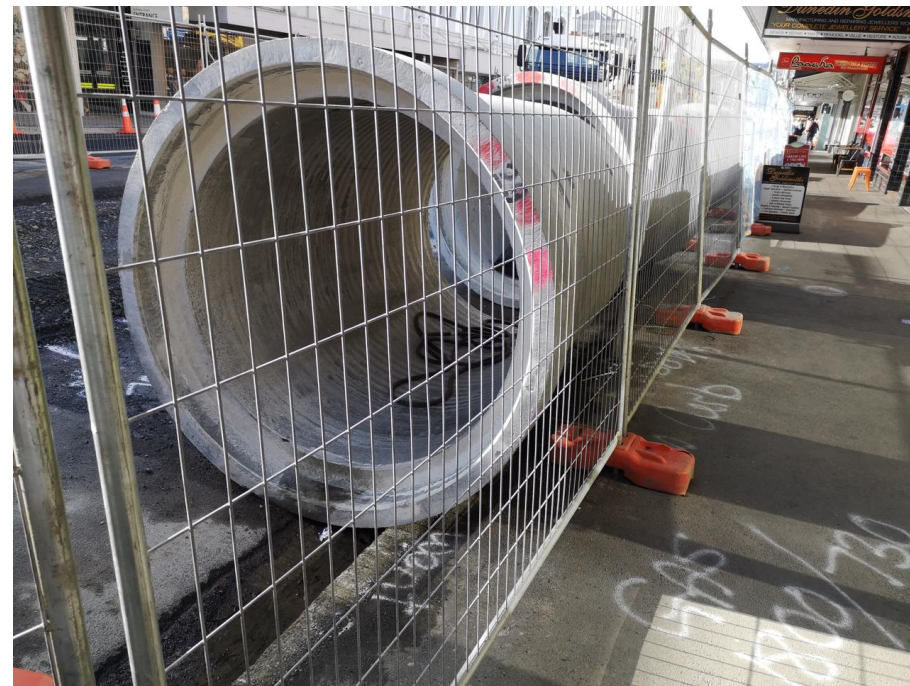


Central City Upgrade

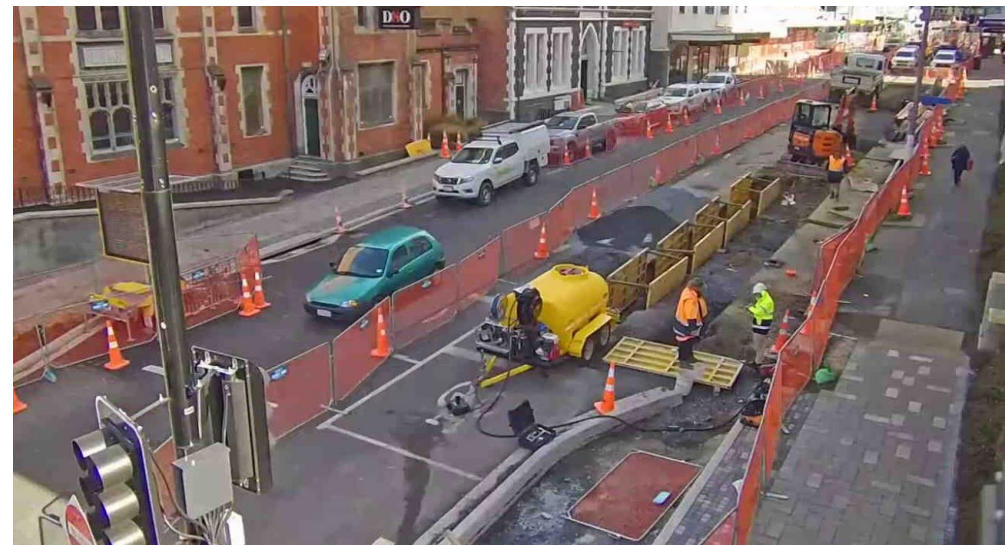




Central City Upgrade



Central City Upgrade



Central City Upgrade



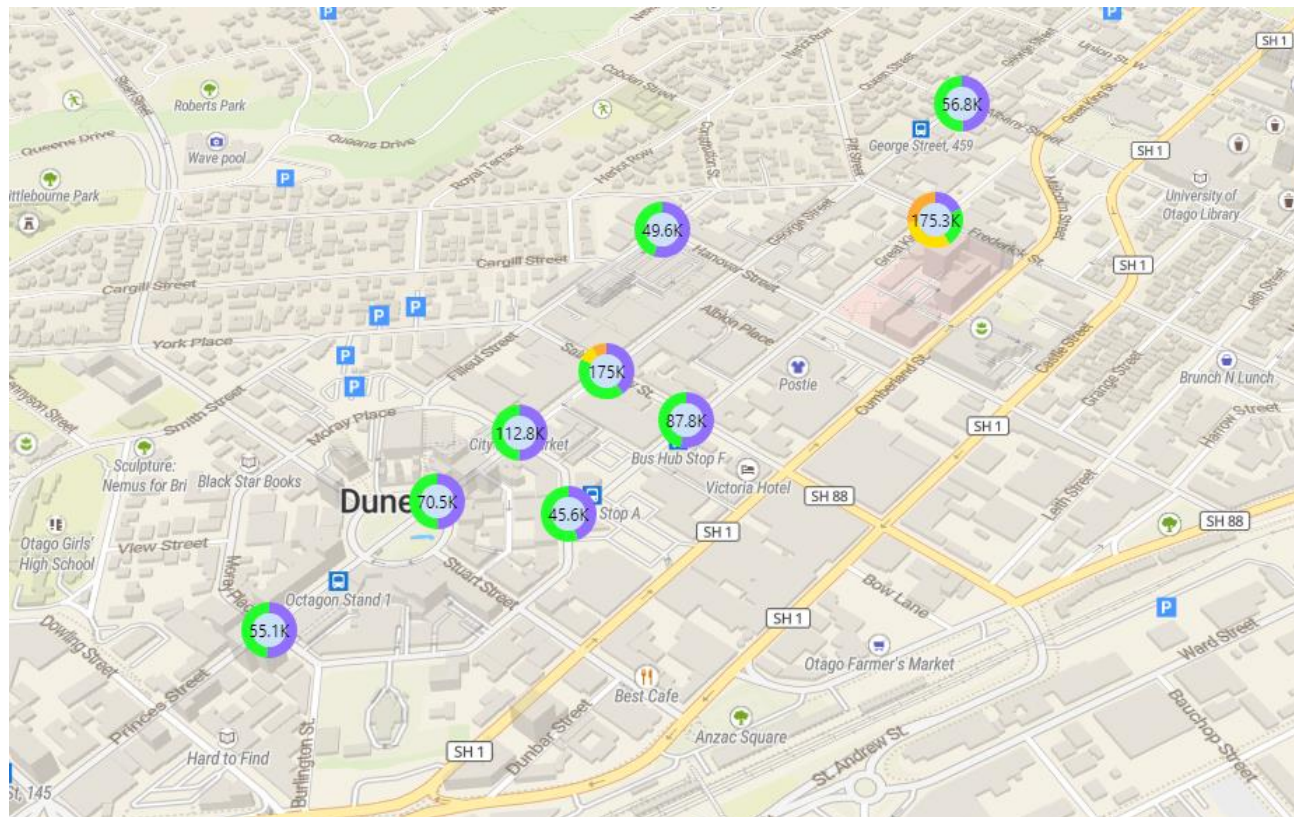
Central City Upgrade





Central City Upgrade

- People counting cameras.
 - 9 installed around central city.
 - 4 more scheduled



Camera 200-george-st
Mon, 24 Jul 2023 10:50:25 AM - Wed, 23 Aug 2023 10:50:25 AM

Counts

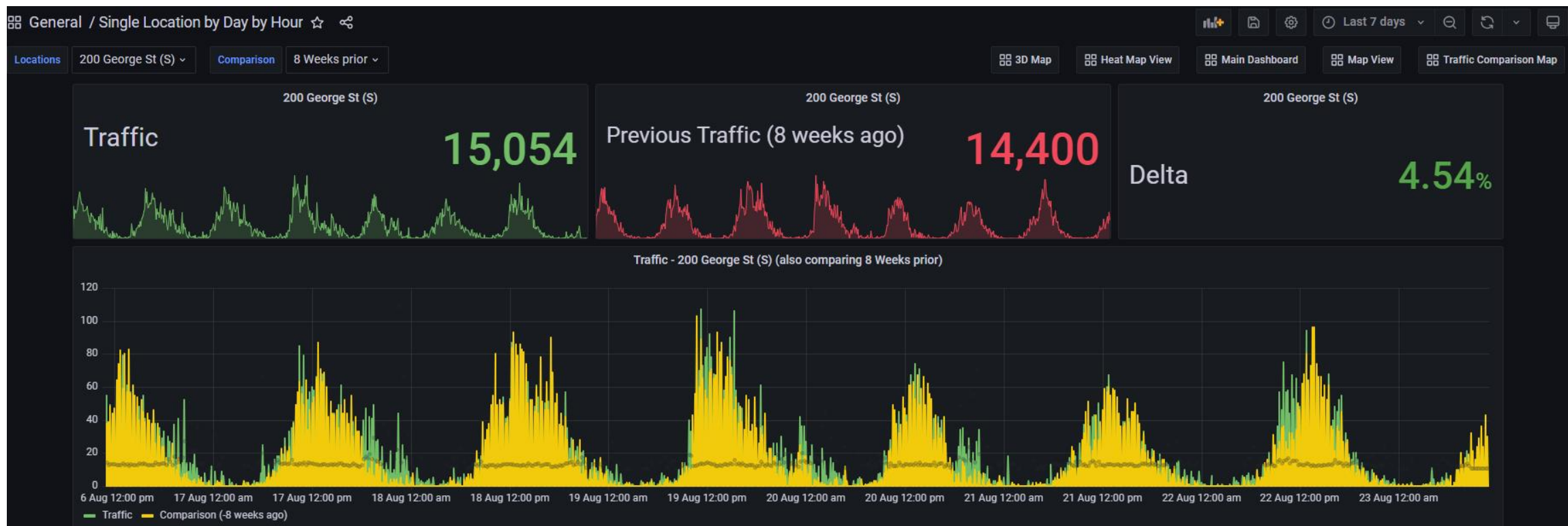
Counter	Count
200 George St (S)	69,912
200 George St (N)	73,748
200 George St (W)	16,357
200 George St (E)	15,029
Total	175,046

Close





Central City Upgrade





Shaping Future Dunedin Transport

Collaboration between Dunedin City Council, Otago Regional Council and NZTA to improve how people move into, out of and around central Dunedin.

Projects include:

- New Dunedin Hospital
- Review of SH1 through city, one way pair
- Harbour Arterial Bypass
- Princes Street bus priority route
- Parking Management





New Dunedin Hospital

- Being constructed between one way pair (State Highway 1)
- One block separates this project from Central City Upgrade !
- Outpatient building expected to open 2025, inpatient 2028.
- Debate about format of State Highway 1 through the city.





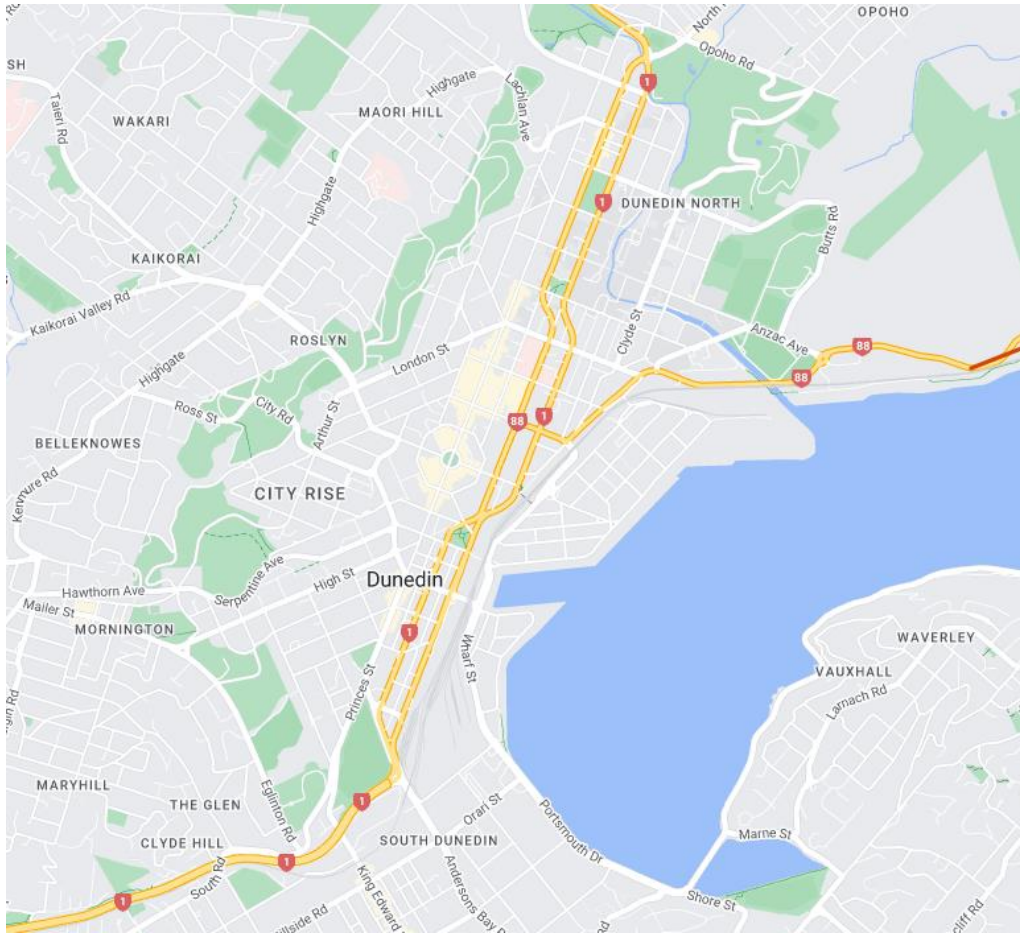
New Dunedin Hospital

- Progress!!





One-way pair (State Highway 1)





Harbour Arterial Bypass

- Major and minor intersection upgrades to address known safety and efficiency issues.
- Encourage drivers (especially trucks) to bypass the central city.
- Four stages.
 - Stage 1 is complete
 - Stage 2 is being consulted on
 - Stage 3 is out for tender
 - Stage 4 at concept design stage
- Future of State Highway 88





Princes Street Bus Priority

- Main southern entrance to central city.
- Mostly four lane road with limited crossing points.
- Major choke point at Jetty Street intersection.
- Project to improve safety and efficiency.
- Bus priority options
 - Bus lanes
 - SCATS Priority Engine





RADAR Detectors

Standard detection method for new intersections or major renewals

- 3 new intersections built
- 4 intersections undergone major renewal
- 4 intersections planned for major renewal

- Good initial results
- Need to plan opening of intersection carefully, configuration requires vehicles
- Struggles a little if cars parked too close to intersection



Camera detectors

- Camera detectors used to replace damaged induction loops
- Mount on existing pole
- Uses existing cable and software
- Each unit covers two lanes
- Setup in advance of road resurfacing





Data Warehouse

- Working on combining data from multiple sources
 - People counters
 - Shared lane counters
 - Vehicle counts
- Make data publicly available
- Resources...





Comms

Direct Ethernet

- Converting VC6 controllers to direct ethernet connections
- Remove Moxas and Eltima
- 7 completed to date, more planned

Controller comms

- Currently have:
 - 16 Fibre
 - 10 VDSL
 - 31 ADSL
 - 33 Council copper (Plus 20 wireless for CCTV)
 - 3 point to point links
- Looking at creating a Mesh network, with fibre connections at strategic locations.





Mast arms

- One old type arm broke in a storm March 2023
- Review all older type arms
- Plans to replace ~6 in the next couple of years (DCC & NZTA)





Mast arms





Shared Paths

- Two projects
 - DCC – Peninsula Connection (Harrington Point to City)
 - NZTA – SH88 (City to Port Chalmers)

