













OUR PEOPLE

GROWTH

- Whangarei x 12 Staff
- Auckland x 80 Staff
- Tauranga x 36 Staff
- Hamilton x 3 Staff
- Wellington x 5 Staff
- Signals
- ITS
- Civil
- Traffic Management





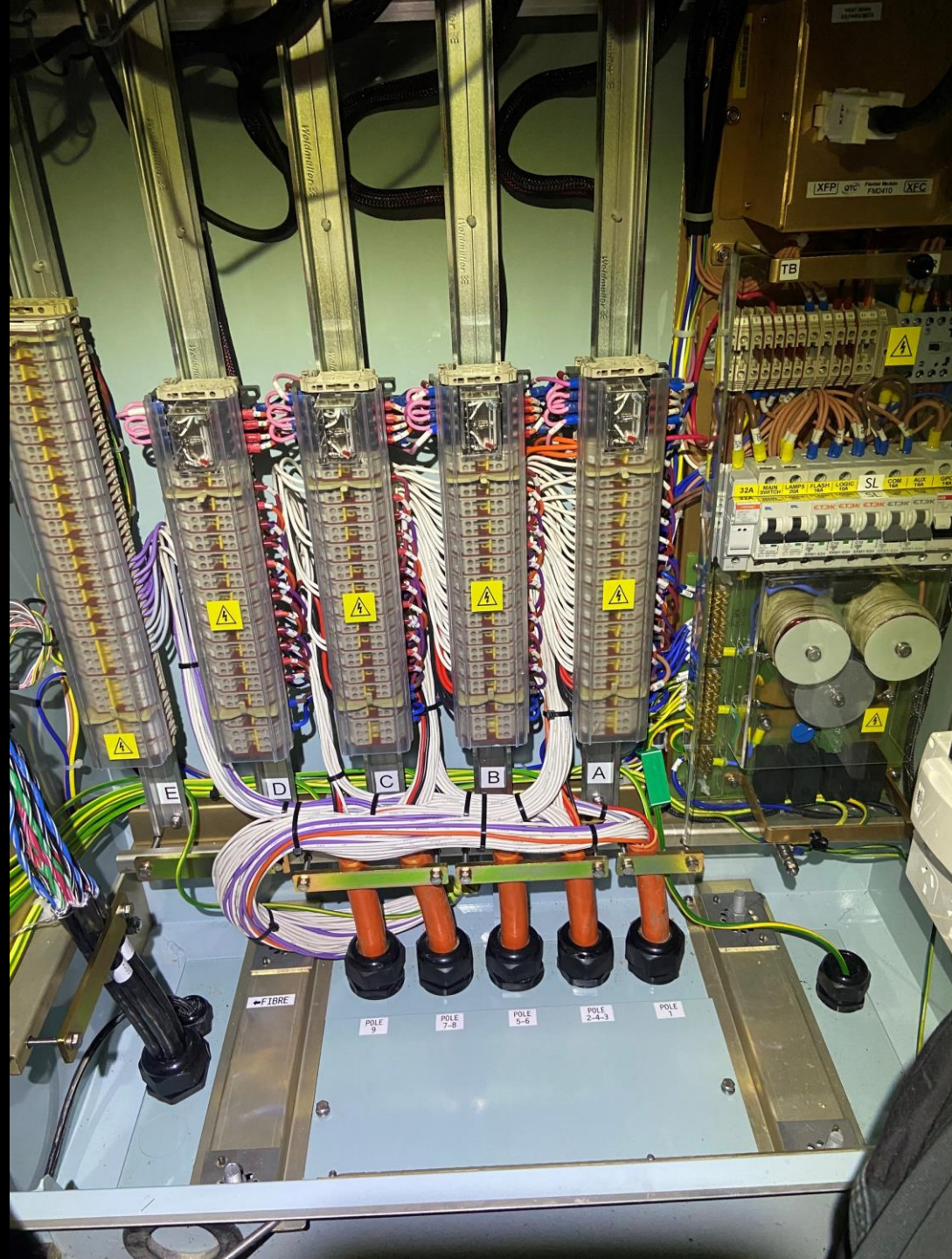
Waitemata (Britomart)

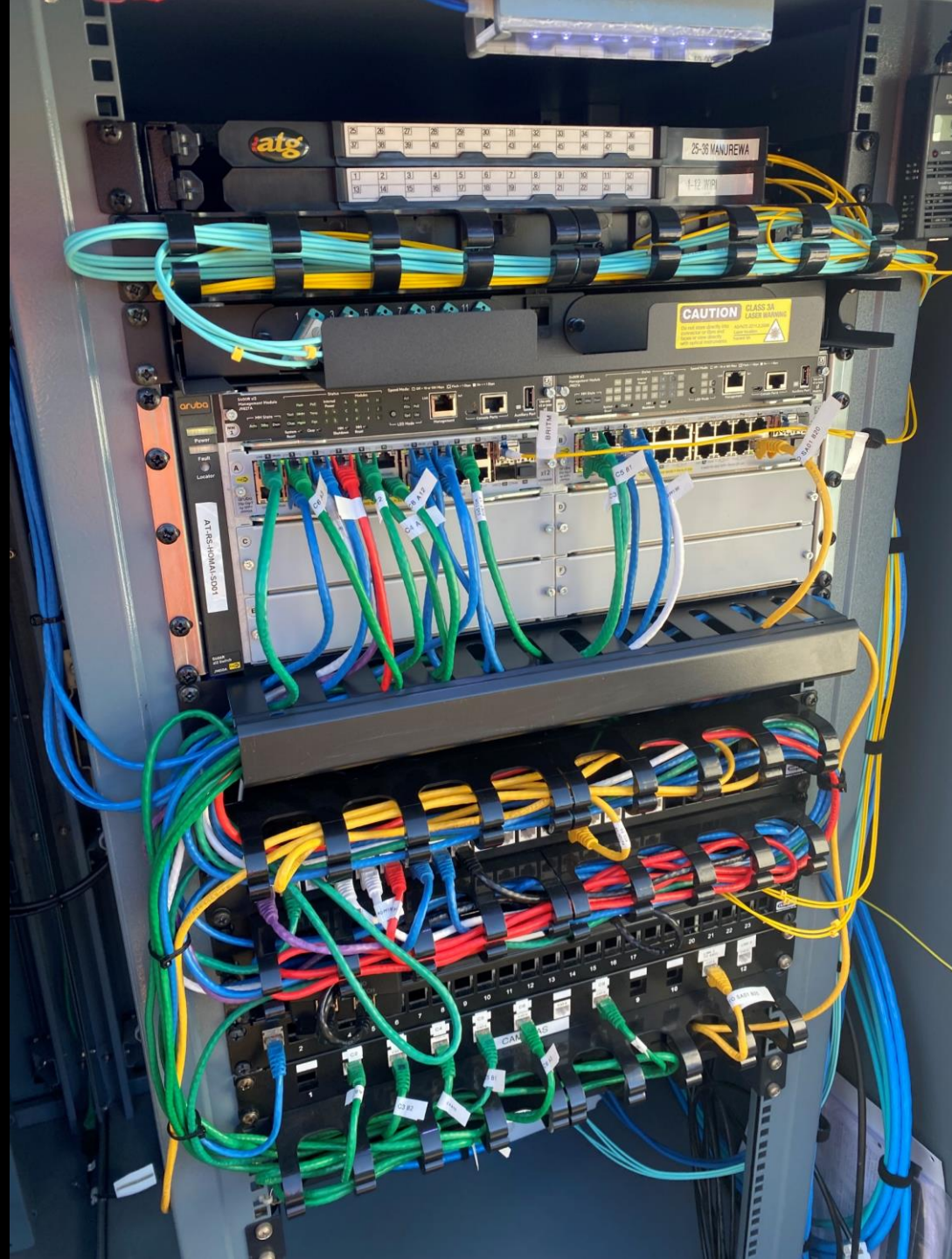
HOKA
FLY

one.nz













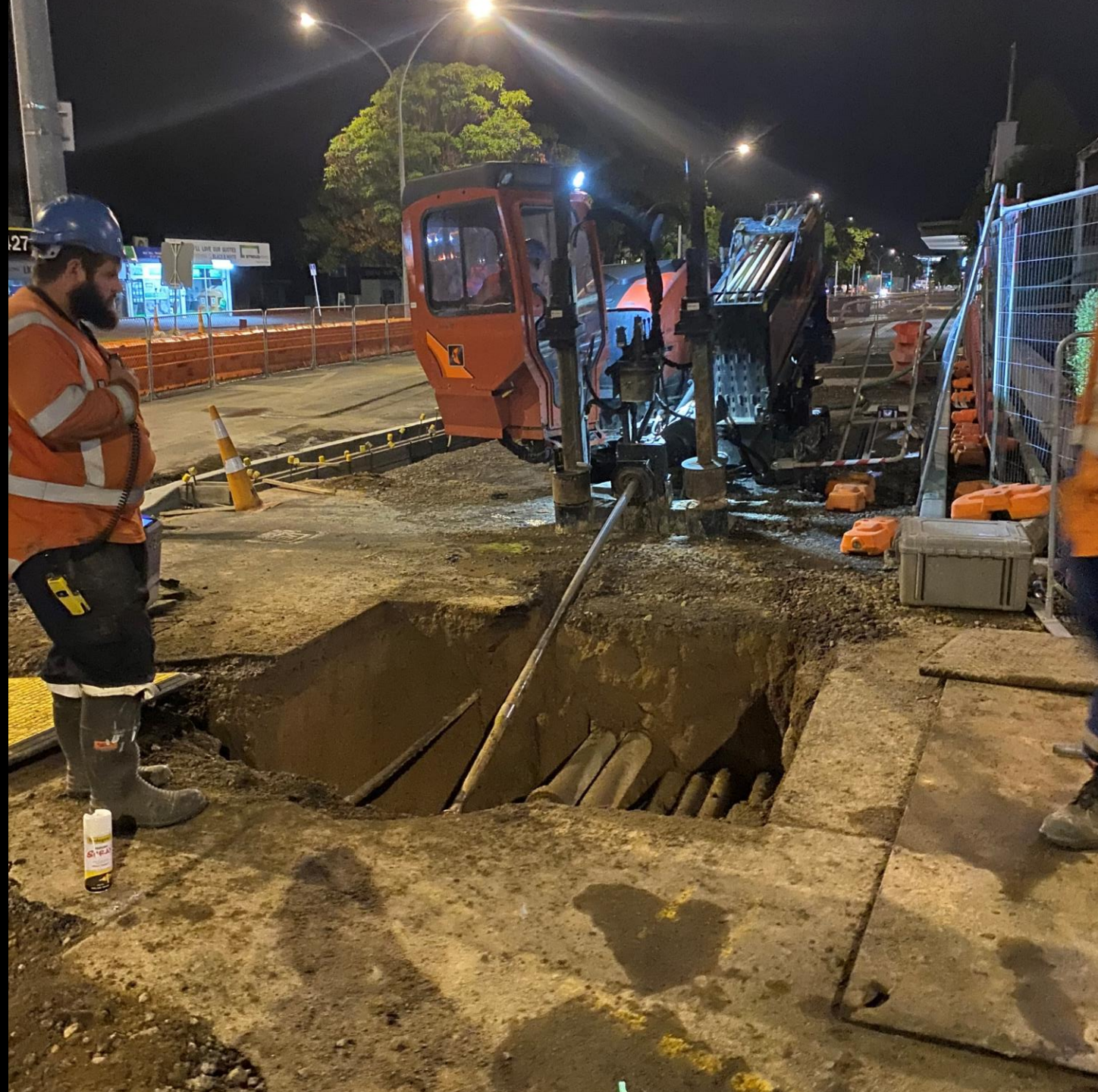












Industry Desire to move away from Loops ?

- Loop cutting - Safety of Workers in the road space
- Traffic disruption
- Environmental disruption
- QUESTIONS TO THE INDUSTRY
- What is the acceptable level of performance for alternative technologies to satisfy or enhance SCATS operation and efficiencies ?



Alternative Detection Technology





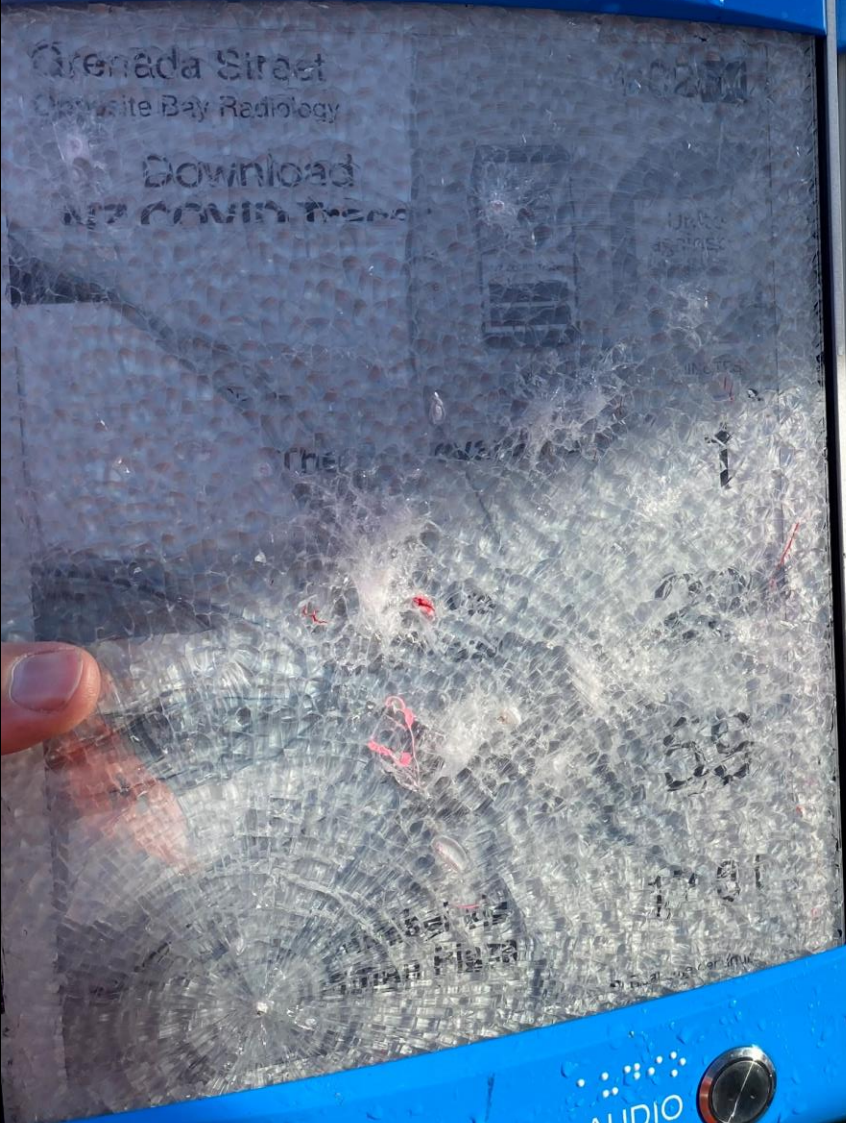








bayhopper
TAURANGA



AUDIO

bayhopper
TAURANGA

Grenada Street
Opposite Bay Radiology

9:01 A

Download
NZ COVID Tracer

New Zealand's official contact tracing app

NZ COVID Tracer helps you keep a digital diary of where you've been and when you were there. This helps to protect your self, your whānau, and your community by allowing us to quickly reach people who may have been exposed to COVID-19.



Unite
against
COVID-19

ROUTE	DESTINATION	MINUTES
2B	to The Boulevard via Bayfair	1
2W	to Wairakei via Papamoa Plaza	30
2B	to The Boulevard via Bayfair	10:01
2W	to Wairakei via Papamoa Plaza	10:31

Real time departure



AUDIO

















FLIR TRAFICAM AI



- High definition CCTV Camera
- DNN Engine - Deep Neural Network
- Occluded objects tracked using intelligent tracking algorithm
- Real Time Trajectory data – Position, Speed and heading of each object
- Enhanced Stop line Detection, Occupancy and Classification





10 POWER OUTLET 10 POWER OUTLET 30 CARAVAN POWER OUTLET

OFF ON OFF ON OFF ON

10 POWER OUTLET

OFF ON

A panel containing four power outlets. The top row has three outlets: two labeled '10 POWER OUTLET' and one labeled '30 CARAVAN POWER OUTLET'. Each has a switch and a meter. The bottom row has one '10 POWER OUTLET' with a switch.

LINEAR PARK
DISTRIBUTION

An empty panel section with two red indicator lights on the right side.

LIGHTING & NETWORK CONTROLS

A panel section with two white ventilation grilles, one above the other.

IRRIGATION

An empty panel section with a label 'IRRIGATION'.

MAIN SWITCH

TARIFF METER

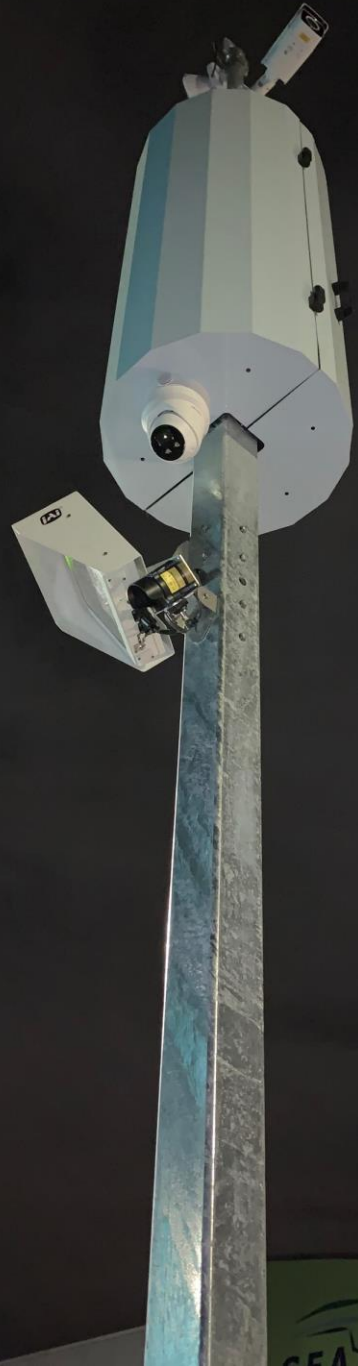
A panel section containing a blue and black main switch and a square tariff meter window.

KCS
KCS Electrical Services
1000/1001/1002/1003/1004/1005/1006/1007/1008/1009/1010/1011/1012/1013/1014/1015/1016/1017/1018/1019/1020/1021/1022/1023/1024/1025/1026/1027/1028/1029/1030/1031/1032/1033/1034/1035/1036/1037/1038/1039/1040/1041/1042/1043/1044/1045/1046/1047/1048/1049/1050/1051/1052/1053/1054/1055/1056/1057/1058/1059/1060/1061/1062/1063/1064/1065/1066/1067/1068/1069/1070/1071/1072/1073/1074/1075/1076/1077/1078/1079/1080/1081/1082/1083/1084/1085/1086/1087/1088/1089/1090/1091/1092/1093/1094/1095/1096/1097/1098/1099/1100/1101/1102/1103/1104/1105/1106/1107/1108/1109/1110/1111/1112/1113/1114/1115/1116/1117/1118/1119/1120/1121/1122/1123/1124/1125/1126/1127/1128/1129/1130/1131/1132/1133/1134/1135/1136/1137/1138/1139/1140/1141/1142/1143/1144/1145/1146/1147/1148/1149/1150/1151/1152/1153/1154/1155/1156/1157/1158/1159/1160/1161/1162/1163/1164/1165/1166/1167/1168/1169/1170/1171/1172/1173/1174/1175/1176/1177/1178/1179/1180/1181/1182/1183/1184/1185/1186/1187/1188/1189/1190/1191/1192/1193/1194/1195/1196/1197/1198/1199/1200/1201/1202/1203/1204/1205/1206/1207/1208/1209/1210/1211/1212/1213/1214/1215/1216/1217/1218/1219/1220/1221/1222/1223/1224/1225/1226/1227/1228/1229/1230/1231/1232/1233/1234/1235/1236/1237/1238/1239/1240/1241/1242/1243/1244/1245/1246/1247/1248/1249/1250/1251/1252/1253/1254/1255/1256/1257/1258/1259/1260/1261/1262/1263/1264/1265/1266/1267/1268/1269/1270/1271/1272/1273/1274/1275/1276/1277/1278/1279/1280/1281/1282/1283/1284/1285/1286/1287/1288/1289/1290/1291/1292/1293/1294/1295/1296/1297/1298/1299/1300/1301/1302/1303/1304/1305/1306/1307/1308/1309/1310/1311/1312/1313/1314/1315/1316/1317/1318/1319/1320/1321/1322/1323/1324/1325/1326/1327/1328/1329/1330/1331/1332/1333/1334/1335/1336/1337/1338/1339/1340/1341/1342/1343/1344/1345/1346/1347/1348/1349/1350/1351/1352/1353/1354/1355/1356/1357/1358/1359/1360/1361/1362/1363/1364/1365/1366/1367/1368/1369/1370/1371/1372/1373/1374/1375/1376/1377/1378/1379/1380/1381/1382/1383/1384/1385/1386/1387/1388/1389/1390/1391/1392/1393/1394/1395/1396/1397/1398/1399/1400/1401/1402/1403/1404/1405/1406/1407/1408/1409/1410/1411/1412/1413/1414/1415/1416/1417/1418/1419/1420/1421/1422/1423/1424/1425/1426/1427/1428/1429/1430/1431/1432/1433/1434/1435/1436/1437/1438/1439/1440/1441/1442/1443/1444/1445/1446/1447/1448/1449/1450/1451/1452/1453/1454/1455/1456/1457/1458/1459/1460/1461/1462/1463/1464/1465/1466/1467/1468/1469/1470/1471/1472/1473/1474/1475/1476/1477/1478/1479/1480/1481/1482/1483/1484/1485/1486/1487/1488/1489/1490/1491/1492/1493/1494/1495/1496/1497/1498/1499/1500/1501/1502/1503/1504/1505/1506/1507/1508/1509/1510/1511/1512/1513/1514/1515/1516/1517/1518/1519/1520/1521/1522/1523/1524/1525/1526/1527/1528/1529/1530/1531/1532/1533/1534/1535/1536/1537/1538/1539/1540/1541/1542/1543/1544/1545/1546/1547/1548/1549/1550/1551/1552/1553/1554/1555/1556/1557/1558/1559/1560/1561/1562/1563/1564/1565/1566/1567/1568/1569/1570/1571/1572/1573/1574/1575/1576/1577/1578/1579/1580/1581/1582/1583/1584/1585/1586/1587/1588/1589/1590/1591/1592/1593/1594/1595/1596/1597/1598/1599/1600/1601/1602/1603/1604/1605/1606/1607/1608/1609/1610/1611/1612/1613/1614/1615/1616/1617/1618/1619/1620/1621/1622/1623/1624/1625/1626/1627/1628/1629/1630/1631/1632/1633/1634/1635/1636/1637/1638/1639/1640/1641/1642/1643/1644/1645/1646/1647/1648/1649/1650/1651/1652/1653/1654/1655/1656/1657/1658/1659/1660/1661/1662/1663/1664/1665/1666/1667/1668/1669/1670/1671/1672/1673/1674/1675/1676/1677/1678/1679/1680/1681/1682/1683/1684/1685/1686/1687/1688/1689/1690/1691/1692/1693/1694/1695/1696/1697/1698/1699/1700/1701/1702/1703/1704/1705/1706/1707/1708/1709/1710/1711/1712/1713/1714/1715/1716/1717/1718/1719/1720/1721/1722/1723/1724/1725/1726/1727/1728/1729/1730/1731/1732/1733/1734/1735/1736/1737/1738/1739/1740/1741/1742/1743/1744/1745/1746/1747/1748/1749/1750/1751/1752/1753/1754/1755/1756/1757/1758/1759/1760/1761/1762/1763/1764/1765/1766/1767/1768/1769/1770/1771/1772/1773/1774/1775/1776/1777/1778/1779/1780/1781/1782/1783/1784/1785/1786/1787/1788/1789/1790/1791/1792/1793/1794/1795/1796/1797/1798/1799/1800/1801/1802/1803/1804/1805/1806/1807/1808/1809/1810/1811/1812/1813/1814/1815/1816/1817/1818/1819/1820/1821/1822/1823/1824/1825/1826/1827/1828/1829/1830/1831/1832/1833/1834/1835/1836/1837/1838/1839/1840/1841/1842/1843/1844/1845/1846/1847/1848/1849/1850/1851/1852/1853/1854/1855/1856/1857/1858/1859/1860/1861/1862/1863/1864/1865/1866/1867/1868/1869/1870/1871/1872/1873/1874/1875/1876/1877/1878/1879/1880/1881/1882/1883/1884/1885/1886/1887/1888/1889/1890/1891/1892/1893/1894/1895/1896/1897/1898/1899/1900/1901/1902/1903/1904/1905/1906/1907/1908/1909/1910/1911/1912/1913/1914/1915/1916/1917/1918/1919/1920/1921/1922/1923/1924/1925/1926/1927/1928/1929/1930/1931/1932/1933/1934/1935/1936/1937/1938/1939/1940/1941/1942/1943/1944/1945/1946/1947/1948/1949/1950/1951/1952/1953/1954/1955/1956/1957/1958/1959/1960/1961/1962/1963/1964/1965/1966/1967/1968/1969/1970/1971/1972/1973/1974/1975/1976/1977/1978/1979/1980/1981/1982/1983/1984/1985/1986/1987/1988/1989/1990/1991/1992/1993/1994/1995/1996/1997/1998/1999/2000















3x166

111

375

100

100

100



STOP
ON
RED
SIGNAL

STOP
ON
RED
SIGNAL

Ratonga Kiriraki
ner Service Centre

Route	Destination	Day	Schedule	Dev
362	Weymouth	17	23:35	
AIR	Airport	8	23:40	C
313	Mangere	9	23:40	
AIR	Airport	8	23:50	
AIR	Airport	8	00:00	

↑ Bays 1-10
↑ Toilets
↑ Tickets | ↑ Information
↑ Pick up | ↑ Taxis | ↑ Way out

10

9

10















EXTRA LOW VOLTAGE



- Over 15 Years of supply to Australia and NZ Signals Industry especially NSW, Victoria, Perth, ACT, Auckland and Christchurch
- 3 x ELV Sites installed in Auckland and 6 installed in Tauranga
- Lab tested at University of Sydney
- Compatibility Tested to TfNSW Traffic Signal Spec TSI-SP-045 Appendix C with Auckland Transport
- Tested on All ELV Controllers both Field and Factory
- No failures and no Ghost Lamp faults



















 CSL
INFRASTRUCTURE

DANGER
400V
XWELFS







WIRELESS INDICATING STUD



WIRELESS INDICATING STUD

- Designed and manufactured to Waka Kotahi M29 Spec and Illumination levels
- Independent Photometric lab tested by Hella in NZ
- Synchronised RF control
- No cutting – No Cable
- Considerable Saving in Labour and Traffic Disruption
- Test Sites on Pedestrian Crossings in Auckland







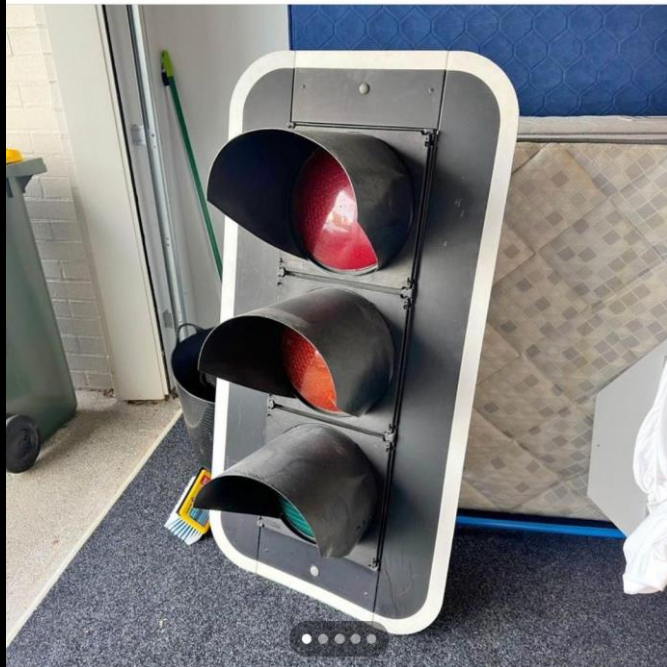












Rare NZ Traffic Light

\$750

Listed over a week ago in Auckland, Auckland

Send seller a message

Hello, is this still available?

Send



Send Offer



Save



Share

Seller information

[Seller details](#)



James Finnigan

Follow















HEAVY VEHICLE
BRIDGE LIMITS
CROSS 4000 kg

GIVE
WAY















**OH, YOU'RE
SLEEPING?**

**LET ME PLAY YOU THE
SONG OF MY PEOPLE**

















RULES

FAILURE TO COMPLY WILL RESULT IN REMOVAL FROM THE PROPERTY

DANGEROUS, INCONSIDERATE & ERRATIC DRIVING, DELIBERATE & UNNECESSARY CONTACT THAT MAY CAUSE HARM TO THE OTHER PERSONS, YOURSELF AND/OR DAMAGE PROPERTY WILL NOT BE TOLERATED AND WILL RESULT IN YOUR RIDE BEING TERMINATED.

YOU WILL BE LIABLE FOR DAMAGE AND COSTS ARISING OUT OF SUBSEQUENT EVENTS.

PROHIBITED BY DRUGS OR ALCOHOL
NOT PERMITTED TO RACE

WEAR SEATBELT AT ALL TIMES
STAY SEATED IN THE KART

NO BOTTLES
NO PUSHING
NO LOCKING

DO NOT BLOCK TRACK UNLESS DIRECTED
NO PARKING OF KARTS

NO REFUND

ARE YOU READY TO RACE?







CARRUS
BAYLEYS
ZARIBA
Zest
Zest
FIRST MORTGAGE TRUST
CRAIGS

CSL
INFRASTRUCTURE

PORT OF TAURANGA
DMS
DMS
FARMER AUTOCLAVE
Genbra
TECT











TURN
LEFT
AT ANY TIME
WITH CARE

**SO THEN THEY STARTED DRIVING
A DIFFERENT ROUTE TO AVOID US**



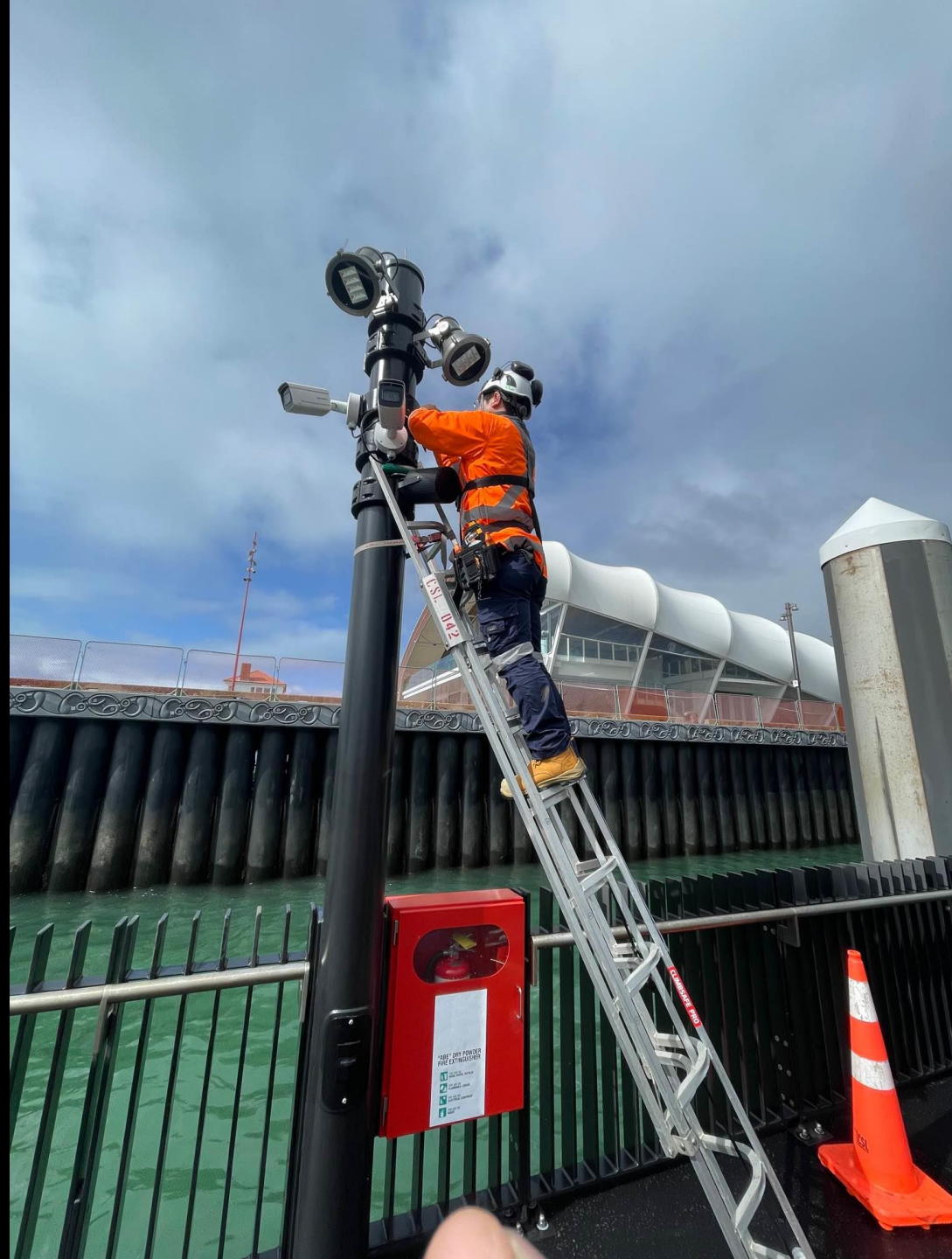
**SO WE STARTED
WORK ON THAT ROAD TOO.**

**MASTER
ELECTRIC**

imgflip.com









































VMS Full matrix sign

96 by 56 pixels

ID: 221107799



Sign mode: Normal

- ✓ **Device connected**
Last message at 11:14:27, 26/05
- ✓ **Sign power**
Display is on!
- ✓ **Message activation**
Activated successfully at 11:14:10, 26/05
- ✗ **Sign special mode**
Normal
- ✓ **Sign error status**
No error
- ✓ **Dead pixel count:**
No Data



← Medallion Dr →















Chem-Dry Tauranga

Chem-Dry

Chem-Dry

6231592
00 00 00 00
00 00 00 00









YOU'LL NEVER
GET TO WORK
ON TIME
HAHA!!











WARNING
A MULTIPLE
Hazard Area
ENTERING THIS PROPERTY
IS PROHIBITED WITHOUT
PERMISSION UNDER THE
Work Health and Safety
Act 2015
DO NOT ENTER
WITHOUT PERMISSION AND
CAUTION OF THE
Hazardous Areas WITHIN













bayofplentytimes.co.nz

Wednesday,

Th

PART OF
NEW ZEALAND'S HERALD

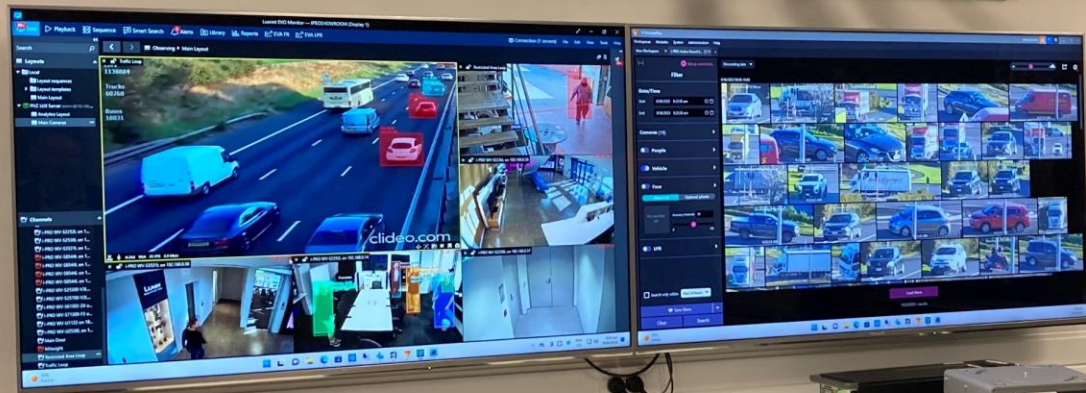
Bay of Plenty

**How e-bikes
could
change your
commute**

P2-3



PRO







NO
PUBLIC
ACCESS

**CSL**
INFRASTRUCTURE
DESIGN • INSTALL • MAINTENANCE

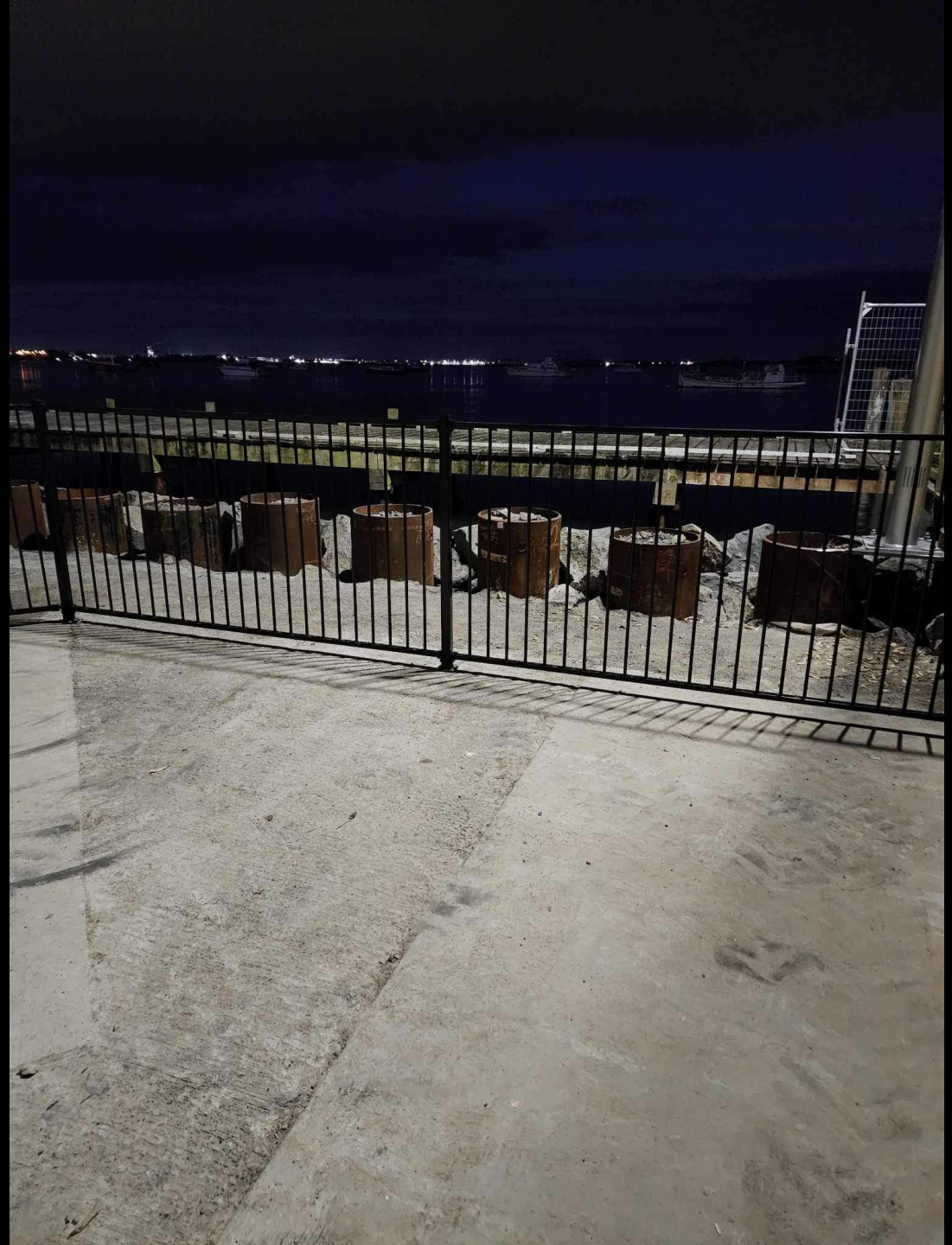
• CIVIL • DRAINAGE • ELECTRICAL • HYDRO VAC •

P
P
Zone

TAX LINK

TAX LINK

THE WILSON INN





MOUNT EDEN FLOORING XTRA

SKINTOPIA

SKINTOPIA

Obsessed with skin

SKINTOPIA

OUR SERVICES

- ADVANCED SKIN TREATMENTS
- PROOFING
- WAXING
- LASHES & BROWS
- EXPERT ADVICE

dermalogica PRO 09 830 7133 | SKINTOPIA.CO.NZ

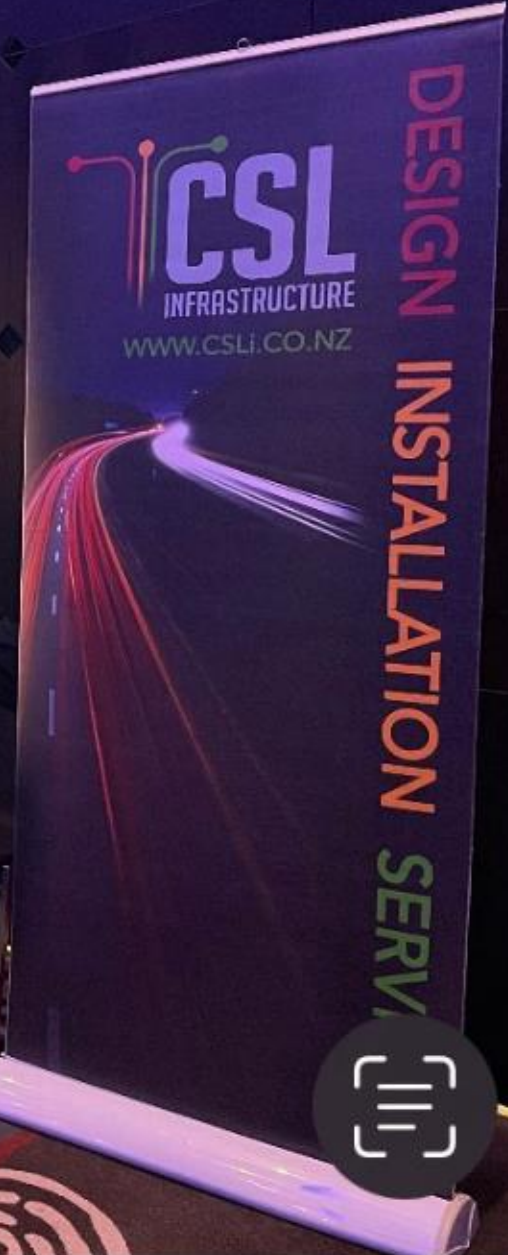
HHC750







19:48







I will never drink again...

















I KAHN'T DO THIS ANYMORE



