

49 Shades of Grey

AKA – Black is the new grey

Mounting of signals

6.3(4) A steady traffic signal display, other than a temporary traffic signal or a pedestrian display, must be mounted on:

- (a) an unpainted pole or structure; or
- (b) a yellow or grey painted pole.

49 Shades of Grey

And does it **EVEN**
MATTER?

When does grey stop being grey?

What is the history?

Why are the rules what they are?

Where did these rules come from?

When did they come from?

What do other people do?

What should we do?



1924 Auckland



1940's

Christchurch

Colombo / Hereford Intersection

Sean Lewis



1951

Wellington

Willis Street and Lambton Quay
Intersection



1950's Christchurch

Colombo / Armagh Intersection

Note the 'Don't Cross' & (presumably) 'Cross' text on the lanterns.

And also the 'Barnes Dance' signage.

1960's

Christchurch

Colombo St

South from the bridge





1963

Christchurch

Mansfield / Papanui Intersection

The first over-head mounted
traffic signal in Christchurch

(no cowls)

Note also the amber lantern
is painted yellow, while the
red & green are black.

1965 Christchurch



Cashel / Colombo
Intersection

Note the striped
signal poles in the
middle of the
photo.

And also the striped
lanterns.



1967 Christchurch

Cashel / High
Intersection

I see primary and
secondary lanterns,
but no tertiary.

Note the lanterns
are all yellow now.



Late 1960's Christchurch

Colombo / Gloucester
Intersection

Note the ped
lanterns.



Early 1970's Christchurch

Colombo / Hereford
/ High Intersection

Striped poles and
lanterns.

1970's Christchurch



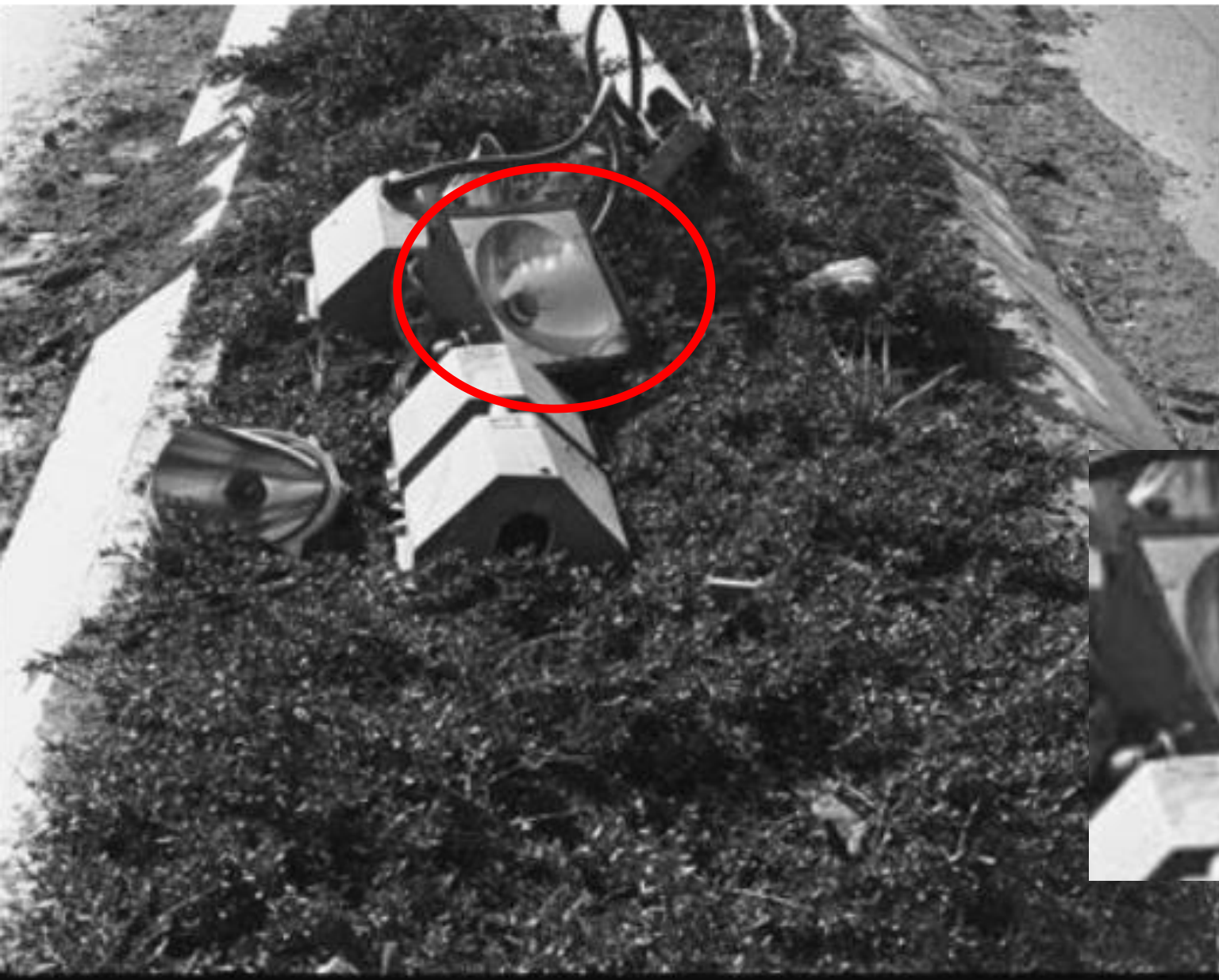
Cashel between
Manchester & High
St Intersection

Note the
rectangular ped
lanterns, and the
yellow call boxes.

1973

Christchurch

Fitzgerald / Moorhouse
Intersection



Note the full
incandescent
lamps.



1974

Christchurch

Blenheim / Matipo
Intersection

Note the lanterns
are now all black
(no yellow).

1974 Christchurch



Colombo / Hereford
/ High Intersection

Striped poles, but
the lanterns are all
black now.

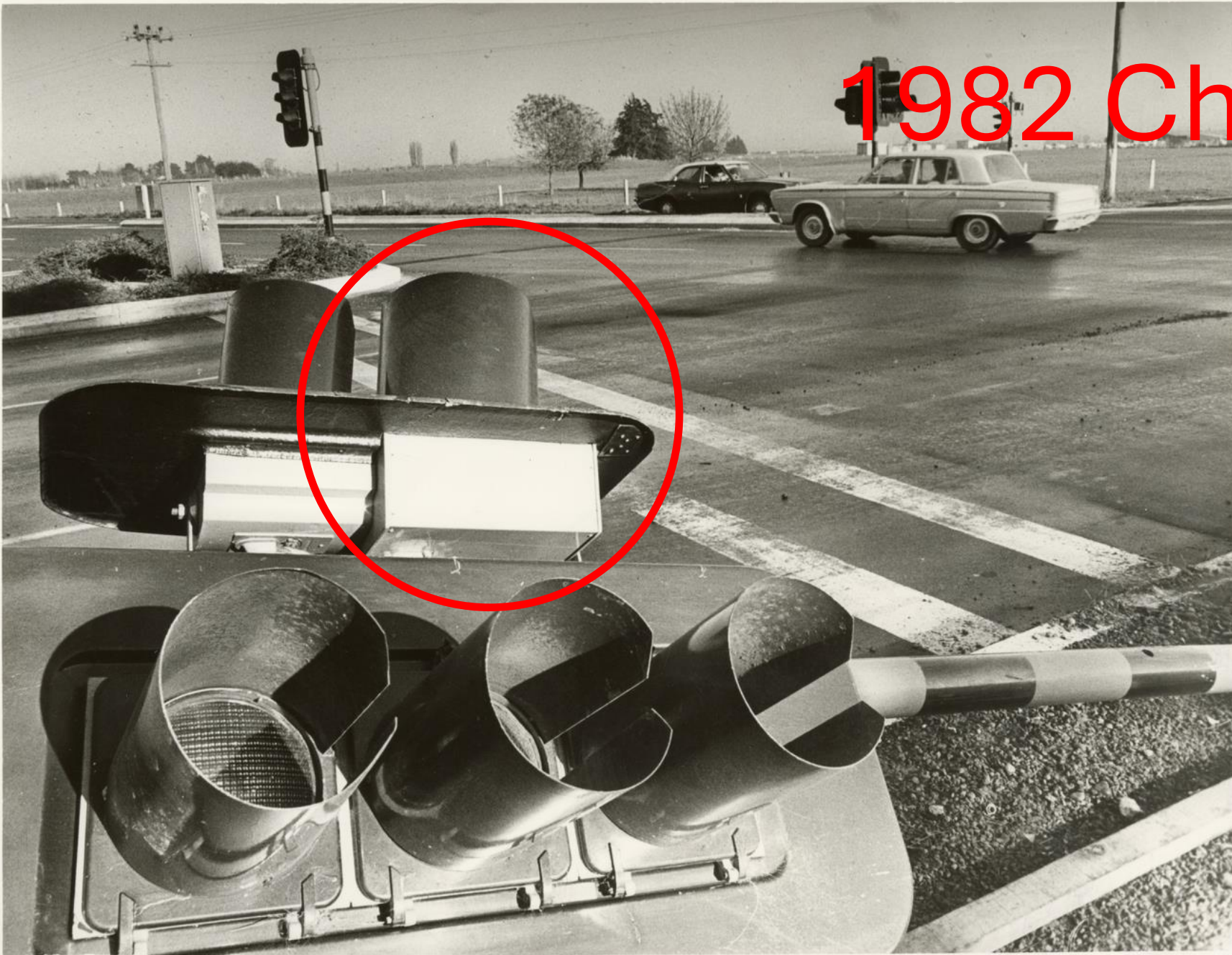
Late 1970's Christchurch

Cranford / Main
North Intersection

Note the big Walk /
Don't Walk ped
lanterns.



1982 Christchurch



Memorial / Russley
Intersection

Backing boards, but
no white border.

What are the 2
lanterns for?

Note the bottom is
larger than the
other.

1984 Christchurch



Memorial / Russley
Intersection

Same intersection
as last slide.

Note, that is SH1 in
the background.

What do other people do?



In Sydney, they have a yellow reflective band on the pole at major intersections. Other sites don't get anything.

Summary

Lots of non-signal poles, dim lanterns & incandescent failures, no backing boards, no white borders, no cowls, no tertiary lanterns, shorter poles, poor placement, no remote lamp monitoring.

Striped poles, galv poles, yellow lanterns.

VS

White frame backing boards, bright LED's, cowls, tertiary lanterns, better placement, monitored systems online.

What should we do?

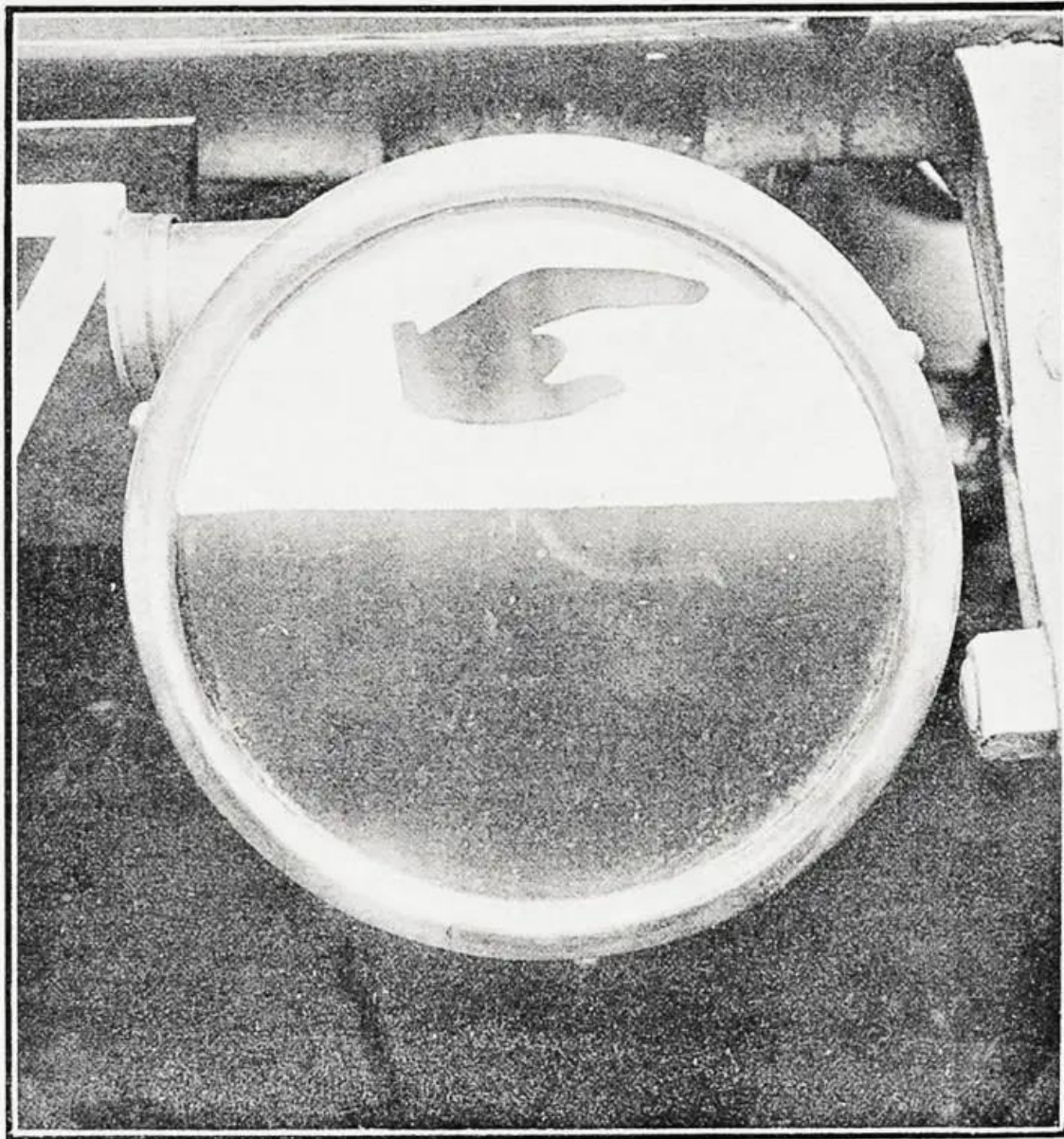
1. Leave the rule as it is?
2. Allow any colour pole in sub-70 km/hr areas?
3. Get a behaviourist to do some research?

Discuss tonight, and we'll have a vote tomorrow morning.

4 more 'honourable mention' slides

1920

Right Turn Lantern,
1920's style

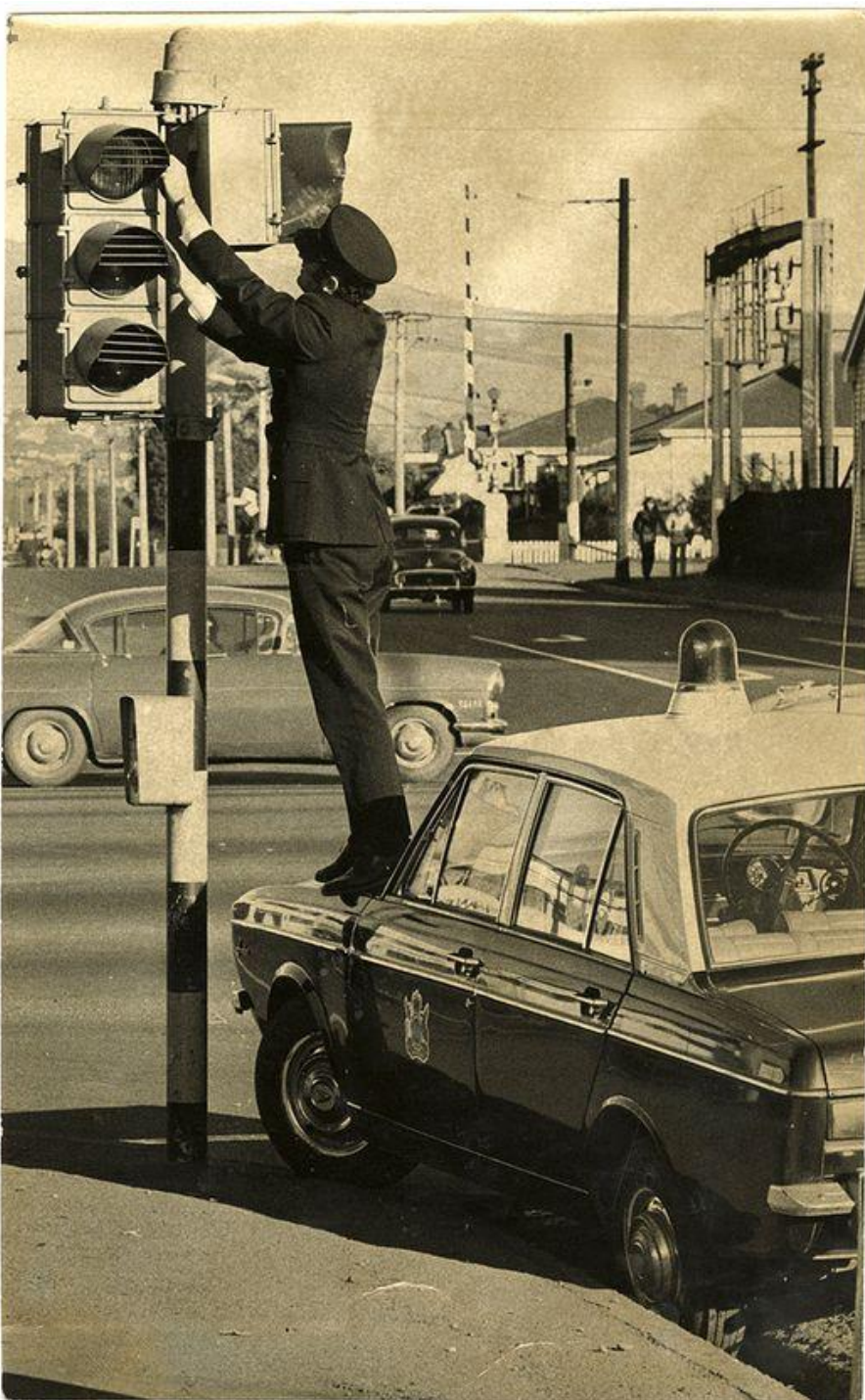


THE HAND INDICATOR, SHOWING A TURN TO THE RIGHT.
Sport and General, photos.

1973 Christchurch

Antigua / Moorhouse
Intersection

Lantern adjustment



1950's Christchurch



Cashel / Oxford
Intersection

Imagine doing a
safety audit at this
site?



1950's Christchurch

Location Unknown

Looks like south-
east side of
Christchurch

How many hazards
can you find in this
picture?

(by 2024 standards)